

Sinclair  Hammelton



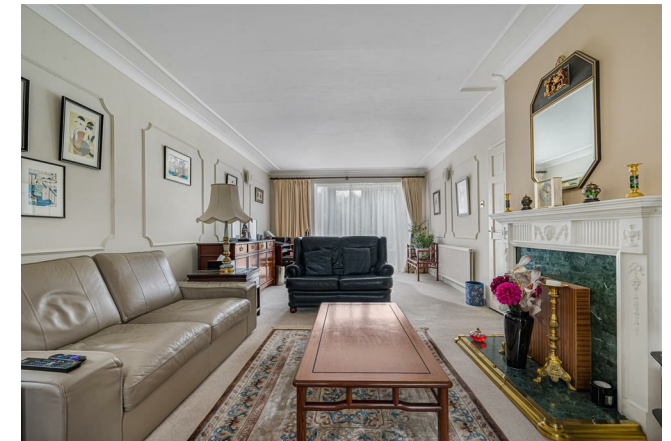
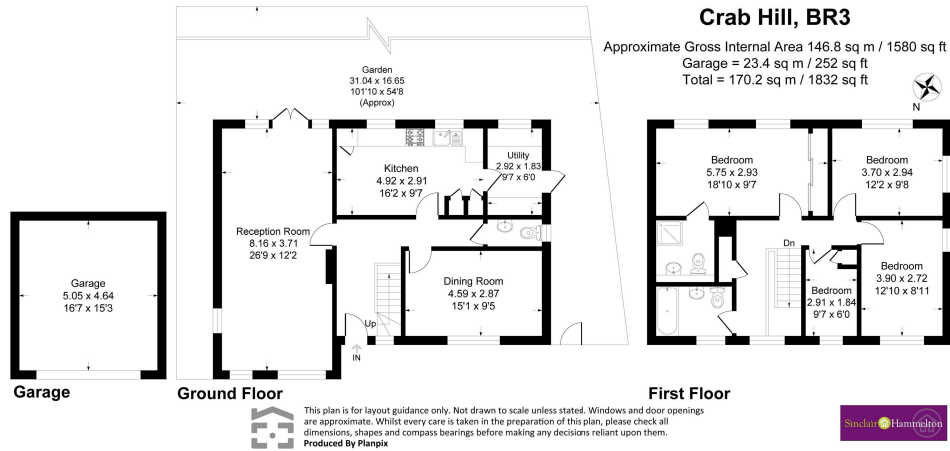
£1,350,000

Crab Hill

Beckenham, BR3 5HE

Sinclair
Hammelton
For Sale
020 8464 5566
www.sinclairhammelton.co.uk

EPC RATING: C COUNCIL TAX BAND: D



Energy Efficiency Rating		Current	Potential
Very energy efficient - lower running costs			
(92 plus) A			
(81-91) B			
(69-80) C		74	83
(55-68) D			
(39-54) E			
(21-38) F			
(1-20) G			
Not energy efficient - higher running costs			
England & Wales		EU Directive 2002/91/EC	

Agents Note: Whilst every care has been taken to prepare these particulars, they are for guidance purposes only. All measurements are approximate and are for general guidance purposes only and whilst every care has been taken to ensure their accuracy, they should not be relied upon and potential buyers/tenants are advised to recheck the measurements



OFFICE ADDRESS

23 High Street
 Bromley
 Kent
 BR1 1LG

OFFICE DETAILS

0208 464 5566
 info@sinclairhammelton.co.uk